



**Smart Cities with AYRUS**

A blue-toned world map with glowing yellow nodes and white lines representing global communication networks. The map is centered on the Atlantic Ocean, showing North and South America on the left and Europe and Africa on the right.

# Ayrus Global Technologies

Exceptional American Electronics



EXCEPTIONAL AMERICAN ELECTRONICS

[www.ayrusglobal.com](http://www.ayrusglobal.com)



**About us**



**Smart City  
Solution**

## ABOUT US

AYRUS - The Global Brand in Advanced surveillance and security solutions From USA . AYRUS is having The comprehensive range of products & solutions for monitoring & securing millions of People & Facilities across the Globe, AYRUS offers an extensive portfolio of high quality products, solutions and services featuring intelligent functionality and modular concepts which enable us to deliver the best Value Proposition & Solutions to our valued clientele.

AYRUS' products serve a diverse set of vertical markets that includes retail, banking and finance, transportation, education, commercial, government, and residential applications. AYRUS is dedicated to providing global resources with local technical, sales and service supports to its valued customers.

AYRUS offer a comprehensive range of product portfolio in Security solutions:

With remarkable presence in 43 Countries along with 9000+ strong Partner Network We continue to enjoy rapid and steady growth . As we are expanding our market share & operation so we would like to invite you to be a witness of our global success.

### WHO IS AYRUS?



## EXCEPTIONAL AMERICAN ELECTRONICS

9000+ Partners

Worldwide Presence  
with Local support

200+ Employees

+28 Years Experience



Optimized  
Solution

Extensive Quality  
Products

Complete Solution  
Provider

Over 20  
Technology  
Partners



ISO 9001:2008 CERTIFIED

RoHS

[www.ayrusglobal.com](http://www.ayrusglobal.com)

# Company Profile



**Experience**

**25** years



**Employees**

**200+**



**Countries**

**43+**



**Partners**

**9000+**



**Technology**

**Partners**

**+20**



**Expertise**

**+20** years



# Company Profile



**Product**  
**1000+**



**Continents**  
**4**



**Solutions**  
**40+**



**Product**  
**Segments**  
**06**

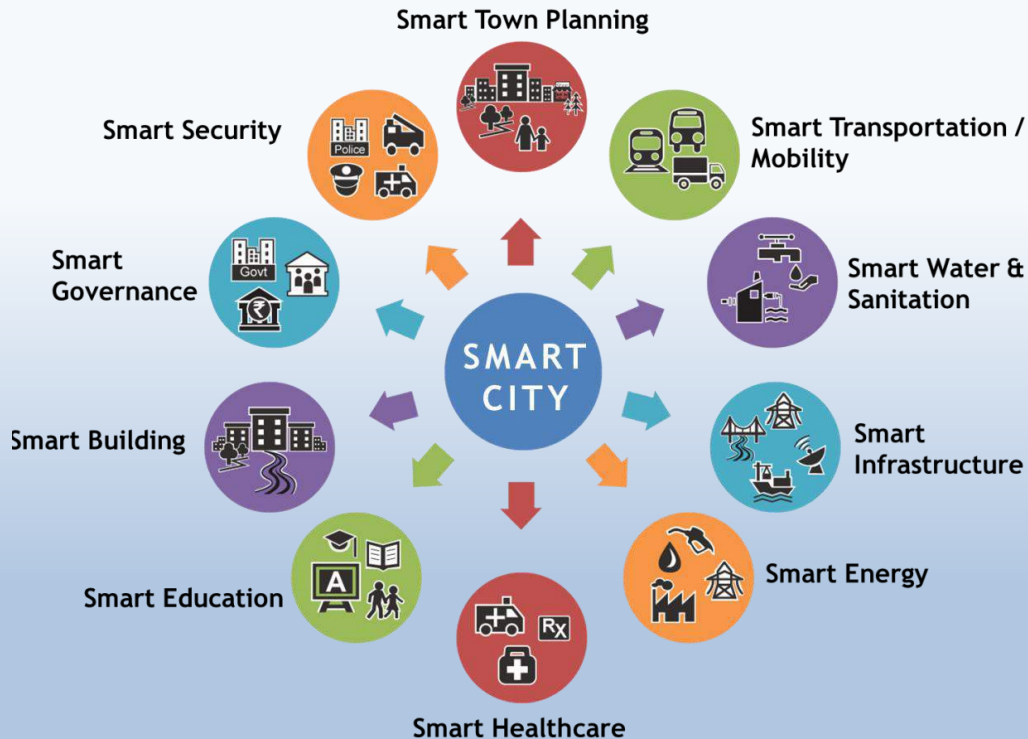


**Verticals**  
**12+**



**R&D**  
**Centers**  
**3**

# Smart Cities with AYRUS





# AYRUS Collaboration with Digifort

## **AYRUS Smart city Solutions are integrated with:**

- Facial Recognition
- Number plate recognition
- Video Analytics
- Video Synopsis
- POS Integration
- Perimeter fence detection system
- Access control system
- Intrusion Synopsis
- Video wall systems





### Main Advantages

- ◆ True WDR 120dB, Low Illumination
- ◆ Face Detection & Capture
- ◆ Support up to 10 thousand kind of face storage
- ◆ Support adding black bar & white bar
- ◆ Analyze and match face information in data base
- ◆ Playback the segment video with detect face information

# Professional **FACE** Detection Recognition Surveillance System

## Face Retrieval



## Face Comparison & Analysis







# Loitering detection



# PEOPLE COUNTING SOLUTIONS

- ▶ Line Counting    ▶ Crowd Detection    ▶ Area Counting    ▶ Queue Detection

## Line Counting

Count the people crossing the virtual line in both directions.



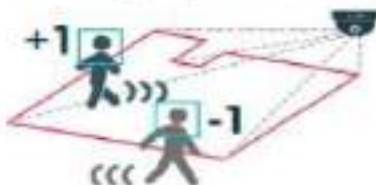
## Queue Detection

Detect and alert when the queue is too long or too short.

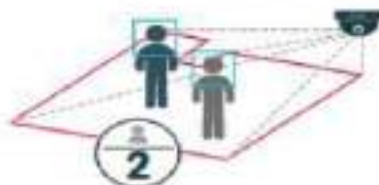


## Area Counting

1. Count the people entering and leaving the predefined area.



2. Count the people within the predefined area.



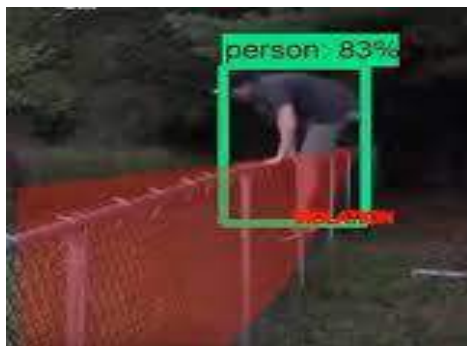
## Crowd Detection

Detect and alert when too many people gather in one area.





# Virtual Fencing





# Open Platform

Open API/SDK, supports seamless integration with third party applications.

300+ Brands, over 7000+ IP Camera & network devices, all natively integrated.

IP Alarm Device support.

Easy and Quick integration with 3rd party system via EMS (Event management server)

Open Platform puts the benefit of the customers first.

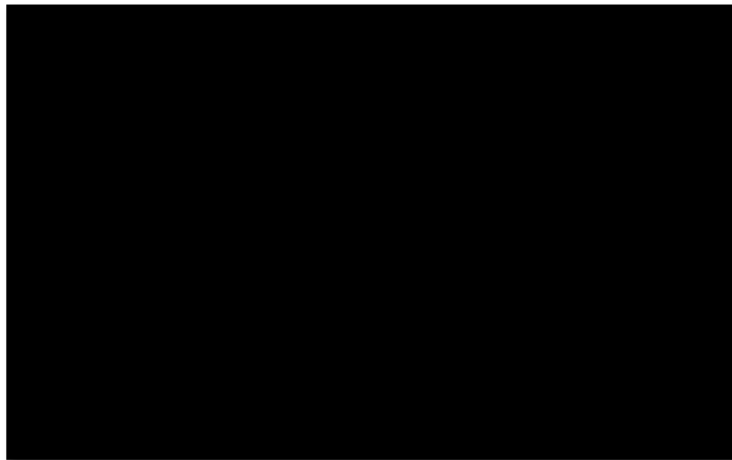




# Key Features

## Video Synopsis:

- Get to the point Fast
- Multiple Configuration option
- See patterns at a glance
- Find your Target
- Speed
- Area of interest/ Area of exclusion
- “Similar to This”
- Customized path



- Traffic Management
- Object Tracking
- Loitering
- Virtual Fence
- Missing Objects
- Abandoned Objects
- Face Detection
- Vehicle Counting
- People Counting
- Colour detection
- Crowd detection
- Alarm activation



# Benefits of LPR



- Allows integration with external database. eg. Cloud
- database Integration with control access devices.
- There is no limit on the recording of plates on the database.
- Allows search by date, time, plate, set characters, used cameras and customized filters.
- Allows you to generate and print powerful reports.
- Largest license plate library in the world. It is fast, highly accurate and cost-effective.
- Able to detect fast moving vehicle speeds of up to 250km/Hr



# Facial Recognition System

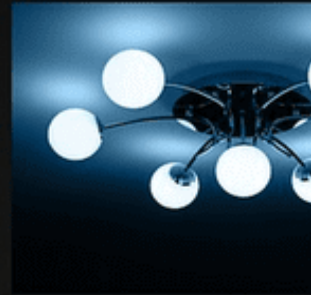
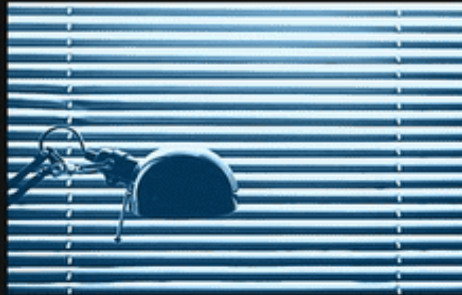
We work with best Forward-Thinking technology partners to create safer and more secure planet through Face Recognition Technology.





# Mobile camera system

- The System allows recording and Live viewing of the images from
- Smart Mobile phones where there is no security camera Installed.



# Applications of Body Camera



Traffic Police



Patrol Police



Coastal Police



Insurance Police



Fire Fighting



Medical Treatment





## AYRUS Global network

AYRUS Collaboration with  
Digifort VMS focuses on  
delivering **INDUSTRY-  
SPECIFIC** Solutions

to customers in a specific  
vertical markets

